

WORLD  
CHALLENGE  
SERIES

CGI

UK  
CHALLENGE

BECAUSE TEAMWORK MATTERS

PEAK DISTRICT

20th - 23rd  
JULY  
2023

[www.ukchallenge.co.uk](http://www.ukchallenge.co.uk)



# The Worlds' Leading Teambuilding Event

Experience the power of working together!

Accomplish something you may never have thought possible and return to the workplace feeling inspired, motivated and ready to take on any obstacle that comes your way!

Your mental and physical limits will be tested as you and your colleagues will strategise, run, cycle, canoe and problem solve across a variety of challenges whilst building strong bonds within your own team.

The UK Challenge has a role for everyone regardless of your fitness level.

**Because Teamwork Matters**



“ This event has changed my life, we arrived as colleagues and left as friends ”



1 The UK Challenge

2 Venue

3 Why take part?

4 Who competes?

5 Enter now

## Venue

Competitors will be housed in individual en suite accommodation in our exclusive event village within the University of Sheffield.

The first UK National Park with its rolling hills, natural beauty and varied wildlife the Peak District is perfectly suited for the CGI UK Challenge with a host of venues awaiting teams.



**“Real life magic from start to finish!”**



1 The UK Challenge

2 Venue

3 Why take part?

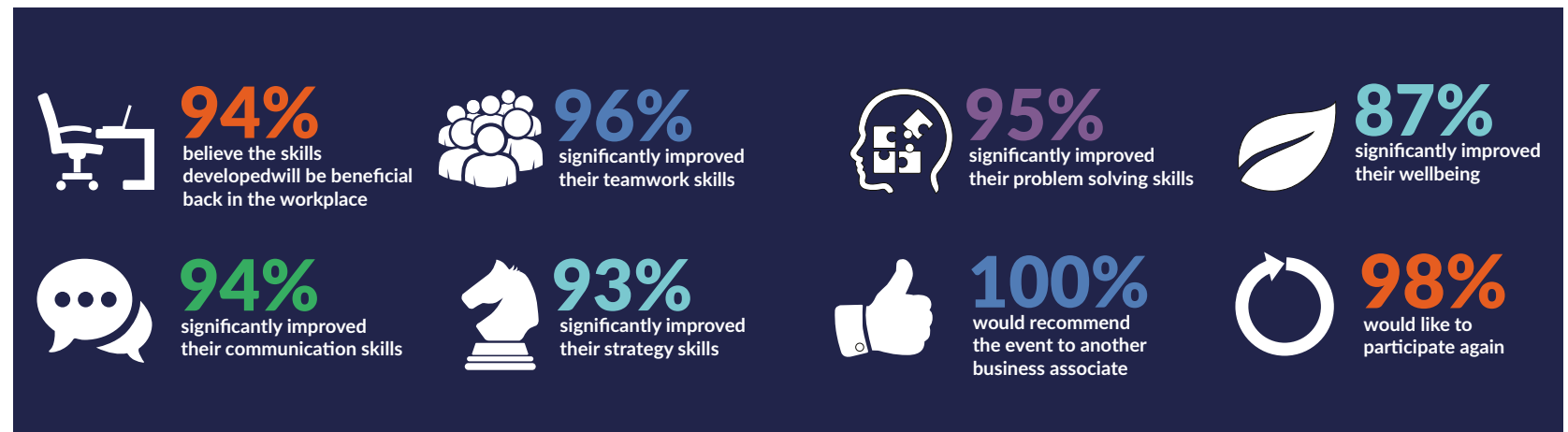
4 Who competes?

5 Enter now

# Why take part?

If you want a team that is motivated, can communicate effectively, “think outside the box”, set targets and work together to reach them, the CGI UK Challenge is for you.

There has never been a more important time to invest in teamwork and bring out the best in your most important "asset".



\* Based on a survey of competitors from the 2021/2022 CGI UK Challenge (n=310)

# Who competes?

Companies and public sector organisations who recognise "teamwork" as a true strategic and competitive advantage form the bedrock of the CGI UK Challenge making it a unique learning environment.

"It's a little microcosm of business so that's why we love doing it. We take all the learning from here and put it back into our organisation so it's more than just the three teams you see here, it's 20 or 30 teams back in AWE who do this as well."

**MARTIN, AWE**

"The positive mental impact this event has can be seen radiating at the final stage finish line. The sense of achievement, belonging and pride is huge."

**TANYA, OVO ENERGY**

"UK Challenge gives employees the opportunity to face challenges together and develop as a team. It's not just a fabulous experience during the event itself, but also a benefit to our organisation as a whole as it helps foster teamwork and energy in the business."

**KIERON, GLOBAL BUSINESS DEVELOPMENT DIRECTOR, CLINIGEN**

"It's the best three days I've ever had in my life. Colleagues become friends at the end of this and ultimately, it's a real pleasure and I look forward to coming back next year."

**MIKE AND ROB, CGI**

- 1 The UK Challenge
- 2 Venue
- 3 Why take part?
- 4 Who competes?
- 5 Enter now



# Enter now

Start your UKC journey now and maximise the benefits from participation in the Worlds' leading teambuilding event. Email us at [info@ukchallenge.co.uk](mailto:info@ukchallenge.co.uk) to enter now, or contact [david.moran@ukchallenge.co.uk](mailto:david.moran@ukchallenge.co.uk)

- 1 The UK Challenge
- 2 Venue
- 3 Why take part?
- 4 Who competes?
- 5 Enter now

		No. Teams	Portal	Captains Day	Full Event Package (Note 1)	Stage Naming	Full Branding at Event	Personal Post Event Video	MPE Training Day	Algarve Challenge Team Entry	Brochure Advert	Additional Benefits	Cost	Entry Cost per Extra Team
<b>TEAM ENTRY</b>	Team	1	✓	✓	✓								£7995	
	Dual*	2	✓	✓	✓								£14,450	
	Multi*	3	✓	✓	✓								£20,750	£5875
<b>PARTNERSHIP</b>	Bakewell*	2	✓	✓	✓		✓			See Note 2	Quarter Page	Bakewell Status	£16,750	£6250
	Bronte (Max 4)*	3	✓	✓	✓	✓	✓	✓	Half Day	See Note 2	Half Page	Bronte Status	£27,450	£5875
	Chatsworth (Max 4)*	4+	✓	✓	✓	✓	✓	✓	Full Day	✓ x 2	Full Page	Chatsworth Status	£33,950	£5595

\* Dual are based on team sign up before July 31st 2022

All costs exclude VAT

Note 1 1 Full event package includes all accommodation (single en suite), all food, key equipment, Gala Party and Presentation. Based on a team of 6 (+ optional 7th team member/senior Exec)

Note 2 All Early Bird sign ups (min 2 teams) will include an Algarve Challenge Team entry.